

# SWL 3230

## 滑移装载机 Skid Loader



- **发动机功率: 55.4kW**  
Engine power
- **整机重量: 3450kg**  
Machine weight
- **额定载荷: 1100kg**  
Rated load

**山河智能装备股份有限公司**  
SUNWARD INTELLIGENT EQUIPMENT CO., LTD.

地址: 湖南·长沙·星沙·山河智能产业园  
Add: Sunward Intelligent Industrial Park, Xingsha, Changsha, Hunan  
电话(Tel): (0086-731) 8357 2828  
网址(Web): [www.sunward.com.cn](http://www.sunward.com.cn)  
邮箱(E-mail): [international@sunward.com.cn](mailto:international@sunward.com.cn)

使用设备时一定要认真阅读操作与保养手册。山河智能遵循不断完善的原则,对产品的部分改进或难以通报阁下,本图册仅作参考,最终解释权属山河智能。

Please read the manual book and maintenance book before operation. Changes are periodically added to the information, and Sunward may change the products or services described in this book at any time without announcement. All rights of this manual book reserve to Sunward.

SWL CH&EN 2019



◆强劲的动力  
Strong Power



定制原装进口久保田发动机，可满足全球最高欧洲Stage5和北美TF4法规，动力强劲，高可靠性，低噪音，节能环保。

The customized Kubota engine imported with original packaging can reach the strictest emission standards (EU Stage5 and EPA TF4), and it features strong power, high reliability, low noise, energy saving and environmental protection.

◆弧形举升路径  
Curve Hoisting Trajectory



特经优化的结构设计使得机器具有同类型中更大的举升高度与卸载距离。

With the specially optimized structural design, the machine enjoys a larger hoisting height and unloading distance compared with the machines of the same type.



◆标配先导手柄  
Pilot Handles

行走及动作全部使用比例手柄控制，操纵轻巧灵敏。

Traveling and actions are all proportion by pilot handles, featuring light and handy and agile operations.



◆标配先导手柄  
Double-accelerator Control

SWL3230滑移装载机采用双油门控制，手油门用来恒定功率的工作场合，脚油门用来铲装工作。

The SWL3220 skid load is of the double-accelerator control mode. The manual accelerator control is used for working places requiring a constant power, while the foot pedal accelerator is used for excavation and loading.

◆闭式静液压行走系统  
Closed Hydrostatic Traveling System

闭式静液压行走系统，配置先进的防过载液压装置，大扭矩马达，驱动力大，自带制动功能，安全可靠。

The closed hydrostatic traveling system is equipped with an advanced anti-overloading hydraulic unit, a large-torque motor, a large driving force, and a braking function, thus ensuring safety and reliability.



◆标准通用的快换装置  
Standard and Universal Quick Change Mechanism

采用国际通用的快换装置，能够快速方便的更换各种厂商的附件都能在该滑移装载机上使用。

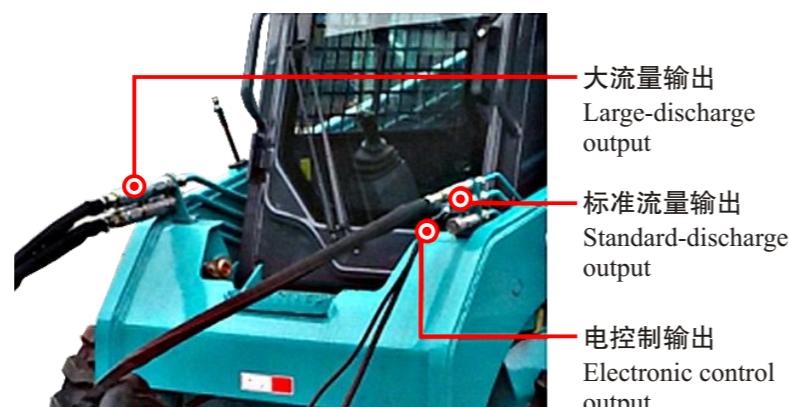
An internationally universal quick change mechanism is adopted so that various accessories can be replaced fast and conveniently. This skid loader can be installed with the accessories provided by most other manufacturers.



- 空间宽阔视野良好，出入轻松，所有按钮，开关都触手可得  
The space is wide, the vision is good, operators can get in and out the cab easily, and all buttons and switches are near at hand.
- 符合FOPS/ROPS标准的司机室结构  
The cab structure reaches both FOPS and ROPS standards.
- 三级电控启动保护系统  
A three-level electronic control startup protection system is adopted.
- 配置齐全的警示灯具、报警信号及倒车喇叭  
All warning lights, warning signals and a back-up beeper are configured.
- 后窗可拆卸  
The rear window can be removed.



可配置暖风机或空调，可根据使用地区的情况选择合适的配置。  
A fan heater or an air conditioner may be configured in accordance with the operation site.



- 大流量输出  
Large-discharge output
- 标准流量输出  
Standard-discharge output
- 电控制输出  
Electronic control output

均可选配大流量系统，产品通过双泵合流加大输出流量，可满足更多大流量属具的需求，如铣刨机等。  
A large-discharge system can be selected. With the confluence of two pumps, the product increases the output discharge to meet the demands of more large-discharge accessories such as milling machine.

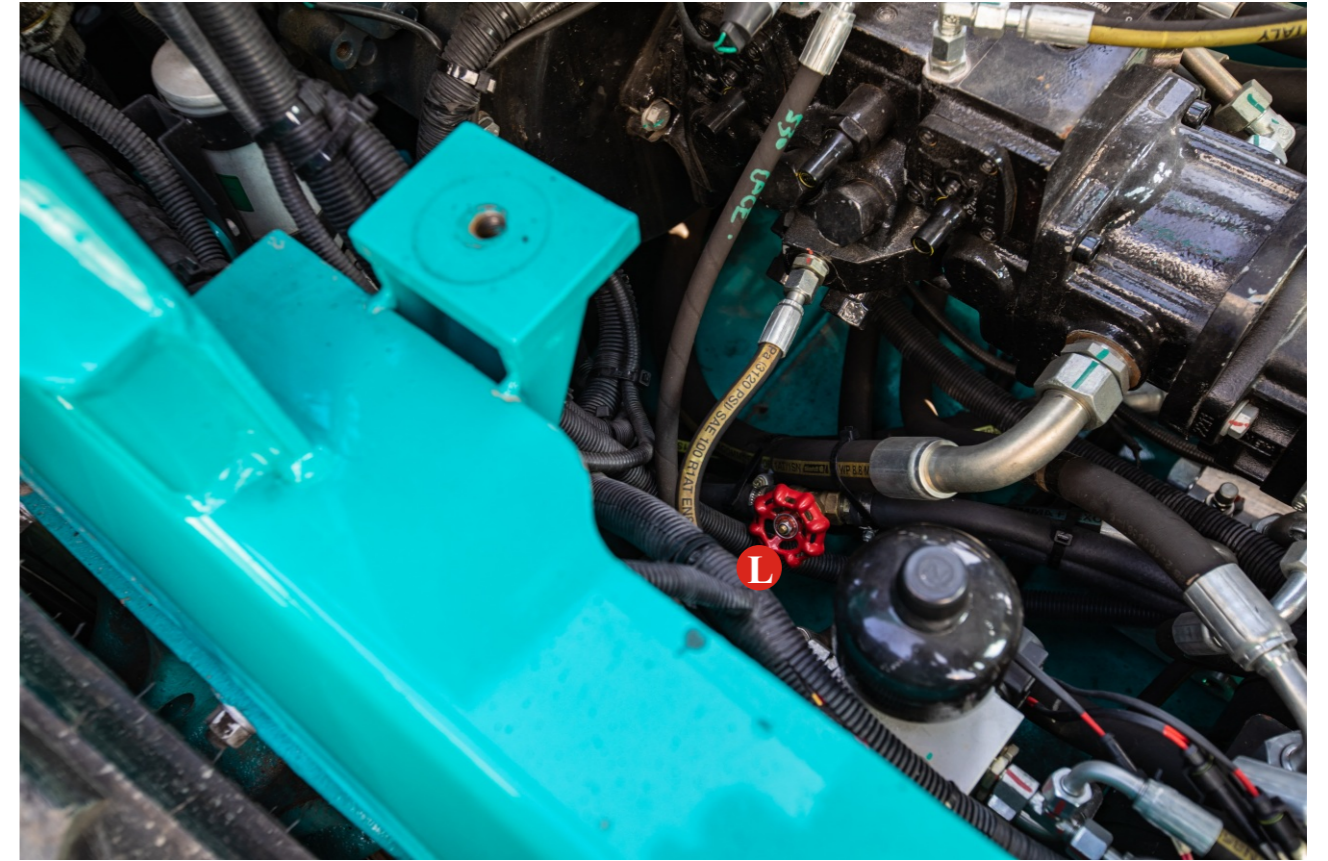


◆ 标配液压平举  
Standard Hydraulic Horizontal Hoisting

动臂举升时保证铲斗与地面的角度不变，防止物料下落，减轻操作人员的劳动强度。  
When the boom is rising, the angle between bucket and ground will not change to prevent the materials from falling, thus reducing the labor intensity of operators.

◆ 工作装置紧急下降功能  
Emergency Descent Function of Working Unit

发动机熄火时，动臂可紧急安全下降。  
The boom can safely conduct the emergency descent in case of the stalling of engine.



**A** 空滤器  
Air filter

**B** 液压回油滤芯  
Oil return filter

**C** 液压油加注口  
Hydraulic oil tank cap

**D** 燃油滤芯  
Fuel filter

**E** 油水分离器  
Oil-water separator

**F** 燃油加注口  
Engine oil tank cap

**G** 机油滤芯  
Oil filter

**H** 副水箱  
Auxiliary tank

**L** 暖水阀开关  
Heater valve switch

# 装备配置 Equipment

标准和选配装备根据国家不同可能会有变化，有关详情，请与公司联系。

The standard and optional equipment varies from country to country. For more information, please contact with us.

## 驾驶室 Cab

|                                     |                                  |
|-------------------------------------|----------------------------------|
| FOPS/ROPS 敞篷驾驶室<br>FOPS/ROPS Cab    | <input type="radio"/>            |
| FOPS/ROPS 封闭驾驶室<br>FOPS/ROPS Canopy | <input checked="" type="radio"/> |
| 安全扶手<br>Safety armrest              | <input checked="" type="radio"/> |
| 可调节座椅<br>Adjustable seat            | <input checked="" type="radio"/> |
| 集中面板<br>Centralized panels          | <input checked="" type="radio"/> |
| 双油门控制<br>Double-accelerator Control | <input checked="" type="radio"/> |
| 先导操纵手柄<br>Pilot control handles     | <input checked="" type="radio"/> |
| 暖风机<br>Fan heater                   | <input checked="" type="radio"/> |
| 冷暖空调<br>Air conditioner             | <input type="radio"/>            |

## 液压系统 Hydraulic System

|                            |                                  |
|----------------------------|----------------------------------|
| 紧急下降<br>Emergency descent  | <input checked="" type="radio"/> |
| 调平功能<br>Leveling function  | <input checked="" type="radio"/> |
| 普通流量<br>General discharge  | <input checked="" type="radio"/> |
| 大流量系统<br>Large-flow system | <input type="radio"/>            |

## 工作装置 Working Unit

|   |                                  |
|---|----------------------------------|
| 通用快换<br>Standard quick change mechanism | <input checked="" type="radio"/> |
| 标准铲斗<br>Standard bucket                 | <input checked="" type="radio"/> |
| 额外配重<br>Additional counterweight        | <input type="radio"/>            |
| 标准轮胎<br>Standard tires                  | <input checked="" type="radio"/> |
| 实心轮胎<br>Solid tires                     | <input type="radio"/>            |
| 多样属具<br>Various accessories             | <input type="radio"/>            |

## 电气系统 Electrical System

|   |                                  |
|---|----------------------------------|
| 前工作灯<br>Front work light                        | <input checked="" type="radio"/> |
| 警示灯<br>Warning light                            | <input checked="" type="radio"/> |
| 倒车警报<br>Back-up beeper                          | <input checked="" type="radio"/> |
| 喇叭<br>Horn                                      | <input checked="" type="radio"/> |
| 外接电源<br>External power supply                   | <input type="radio"/>            |
| 属具电控系统<br>Electronic accessories control system | <input type="radio"/>            |
| 后工作灯<br>Rear work light                         | <input type="radio"/>            |

● 标准配置 Standard equipment

○ 选购配置 Optional equipment



# 产品参数 Product Parameter

| 作业参数 Operation Parameter |   |                |  |
|--------------------------|---|----------------|--|
| A                        | 最大操作高度 Maximum operation height   | mm             | 4020   |
| B                        | 至铲斗销的高度 Height between bucket pin and ground                              | mm             | 3123   |
| C                        | 至司机室顶的高度 Height between cab top and ground                                | mm             | 2068   |
| D                        | 铲斗水平时至其底部的最大高度 Maximum height between horizontal bucket bottom and ground | mm             | 2948   |
| E                        | 不带附件时的长度 Length not including accessories                                 | mm             | 2958   |
| F                        | 带标准铲斗的长度 Length including standard bucket                                 | mm             | 3727   |
| G                        | 最大高度时的卸载角 Unloading angle at the largest height                           | °              | 43   |
| H                        | 卸载高度 Unloading height   | mm             | 2395   |
| J                        | 卸载距离 Unloading distance   | mm             | 625  |
| K                        | 铲斗在地面的翻转角 Flip angle of bucket on the ground                              | °              | 30   |
| L                        | 铲斗在最高时的翻转角 Flip angle of bucket at the largest height                     | °              | 93   |
| M                        | 轴距 Wheelbase  | mm             | 1148   |
| P                        | 离地间隙 Ground clearance   | mm             | 205  |
| Q                        | 离去角 Departure angle   | °              | 26   |
| R                        | 不带附件时的前转弯半径 Front turning radius not including accessories                | mm             | 1344   |
| S                        | 前转弯半径 Front turning radius  | mm             | 2201   |
| T                        | 后转弯半径 Rear turning radius   | mm             | 1747   |
| U                        | 尾部长度 Tail length  | mm             | 1170   |
| V                        | 轮距 Wheel span   | mm             | 1475   |
| W                        | 铲斗宽度 Bucket width   | mm             | 1830   |
| 性能 Performance           |   |                |  |
|                          | 整机重量 Overall weight   | kg             | 3450   |
|                          | 装载量 Loading capacity  | kg             | 1100   |
|                          | 倾覆载荷 Tipping load   | kg             | 2200   |
|                          | 铲斗掘起力 Digging force of bucket   | kg             | 2480   |
|                          | 动臂掘起力 Digging force of boom   | mm             | 2430   |
|                          | 最大行驶速度 Maximum traveling speed  | km/h           | 12.6   |
|                          | 斗容 Bucket capacity  | m <sup>3</sup> | 0.53   |
| 发动机 Engine               |   |                |  |
|                          | 品牌 Brand  |                | KUBOTA   |
|                          | 型号 Model  |                | V3307-CR-TE5B  |
|                          | 类型 Type   |                | 4缸、水冷、柴油发动机 4-cylinder, water cooling, diesel engine |
|                          | 排放标准 Emission standard  |                | EPA Tier4 / EU Stage III A                           |
|                          | 功率 Power  | kW/rpm         | 55.4/2600  |
|                          | 最大扭矩 Maximum torque   | N·m/rpm        | 265/1600   |
| 电器系统 Electrical System   |   |                |  |
|                          | 启动马达 Starting motor   | V/kW           | 12/3.0   |
|                          | 发电机 Generator   | V/A            | 12/80  |
|                          | 蓄电池 Battery   | Ah             | 120  |
| 加油量 Fueling Amount       |   |                |  |
|                          | 液压油箱 Hydraulic oil tank   | L              | 60   |
|                          | 燃油箱 Fuel tank   | L              | 110  |
| 液压系统 Hydraulic System    |   |                |  |
|                          | 标准流量 Standard discharge   | L/min          | 86   |
|                          | 大流量 Large discharge   | L/min          | 131  |
|                          | 标准工作压力 Standard working pressure  | bar            | 210  |
|                          | 大流量工作压力 Large-discharge working pressure                                  | bar            | 165  |

