

SWL 2830

滑移装载机 Skid Loader



- **发动机功率: 48.6kW**
Engine power
- **整机重量: 2830kg**
Machine weight
- **铲斗容量: 0.43m³**
Bucket capacity

山河智能装备股份有限公司
SUNWARD INTELLIGENT EQUIPMENT CO., LTD.

地址: 湖南·长沙·星沙·山河智能产业园
Add: Sunward Intelligent Industrial Park, Xingsha, Changsha, Hunan
电话(Tel): (0086-731) 8357 2828
网址(Web): www.sunward.com.cn
邮箱(E-mail): international@sunward.com.cn

使用设备时一定要认真阅读操作与保养手册。山河智能遵循不断完善的原则,对产品的部分改进或难以通报阁下,本图册仅作参考,最终解释权属山河智能。

Please read the manual book and maintenance book before operation. Changes are periodically added to the information, and Sunward may change the products or services described in this book at any time without announcement. All rights of this manual book reserve to Sunward.

SWL CH&EN 2019



◆强劲的动力
Strong Power



定置原装进口久保田发动机，可满足全球最高欧洲Stage5和北美TF4法规，动力强劲，高可靠性，低噪音，节能环保。

The customized Kubota engine imported with original packaging can reach the strictest emission standards (EU Stage5 and EPA Tf4), and it features strong power, high reliability, low noise, energy saving and environmental protection.

◆弧形举升路径
Curve Hoisting Trajectory



特经优化的结构设计使得机器具有同类型中更大的举升高度与卸载距离。

With the specially optimized structural design, the machine enjoys a larger hoisting height and unloading distance compared with the machines of the same type.



◆标配先导手柄
Pilot Handles

行走及动作全部使用先导液压手柄控制，操纵轻巧灵敏。

Traveling and actions are all controlled by pilot handles, featuring light and handy and agile operations.



◆标配先导手柄
Double-accelerator Control

SWL2830滑移装载机采用双油门控制，手油门用来恒定功率的工作场合，脚油门用来铲装工作。

The SWL2830 skid loader is of the double-accelerator control mode. The manual accelerator control is used for working places requiring a constant power, while the foot pedal accelerator is used for excavation and loading.

◆闭式静液压行走系统
Closed Hydrostatic Traveling System

闭式静液压行走系统，配置先进的防过载液压装置，大扭矩马达，驱动力大，自带制动功能，安全可靠。

The closed hydrostatic traveling system is equipped with an advanced anti-overloading hydraulic unit, a large-torque motor, a large driving force, and a braking function, thus ensuring safety and reliability.



◆标准通用的快换装置
Standard and Universal Quick Change Mechanism

采用国际通用的快换装置，能够快速方便的更换各种厂商的附件都能在该滑移装载机上使用。

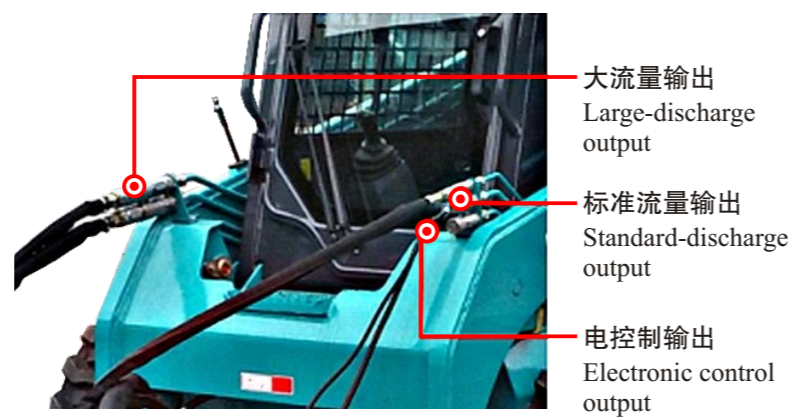
An internationally universal quick change mechanism is adopted so that various accessories can be replaced fast and conveniently. This skid loader can be installed with the accessories provided by most other manufacturers.



- 空间宽阔视野良好，出入轻松，所有按钮，开关都触手可得
The space is wide, the vision is good, operators can get in and out the cab easily, and all buttons and switches are near at hand.
- 符合FOPS/ROPS标准的司机室结构
The cab structure reaches both FOPS and ROPS standards.
- 三级电控启动保护系统
A three-level electronic control startup protection system is adopted.
- 配置齐全的警示灯具、报警信号及倒车喇叭
All warning lights, warning signals and a back-up beeper are configured.
- 后窗可拆卸
The rear window can be removed.



可配置暖风机或空调，可根据使用地区的情况选择合适的配置。
A fan heater or an air conditioner may be configured in accordance with the operation site.

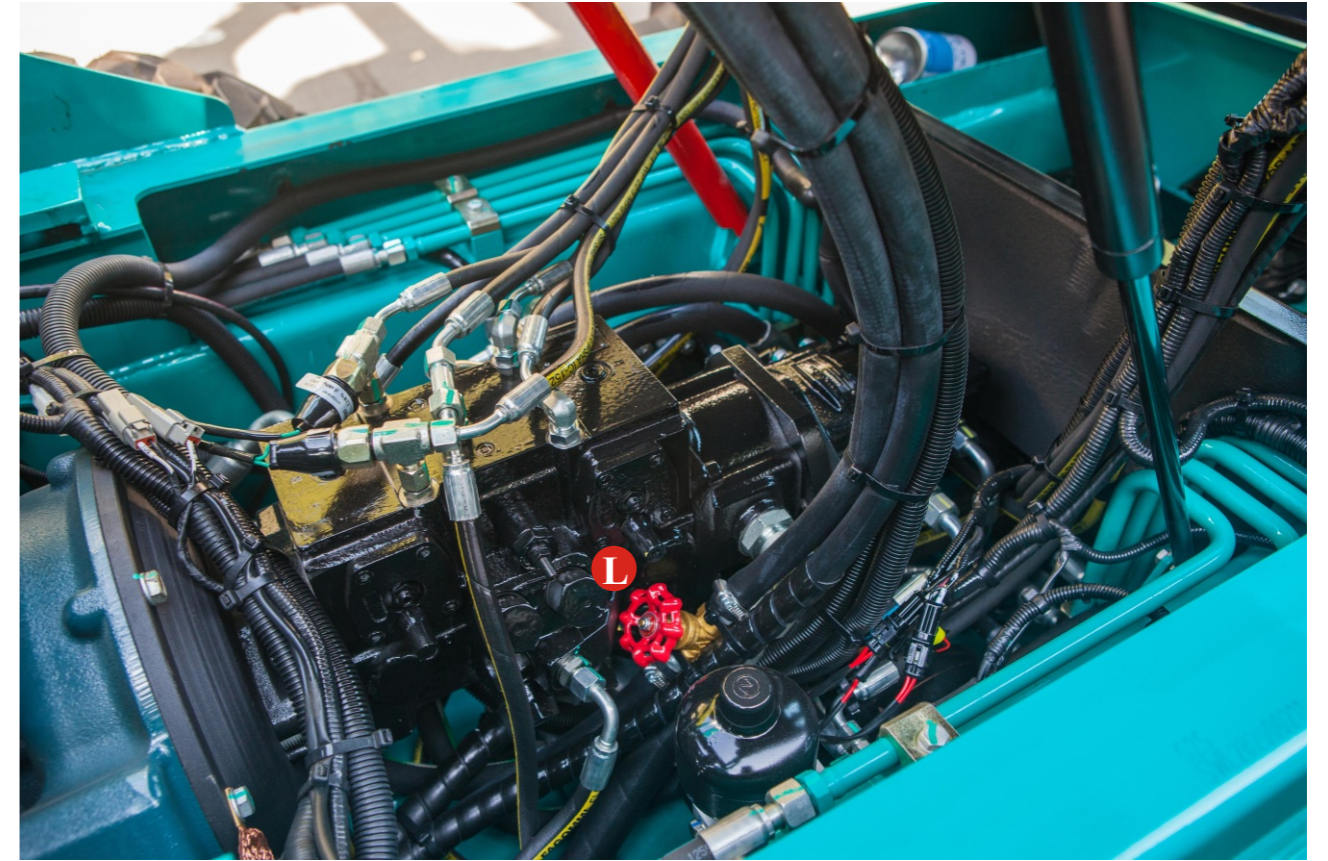
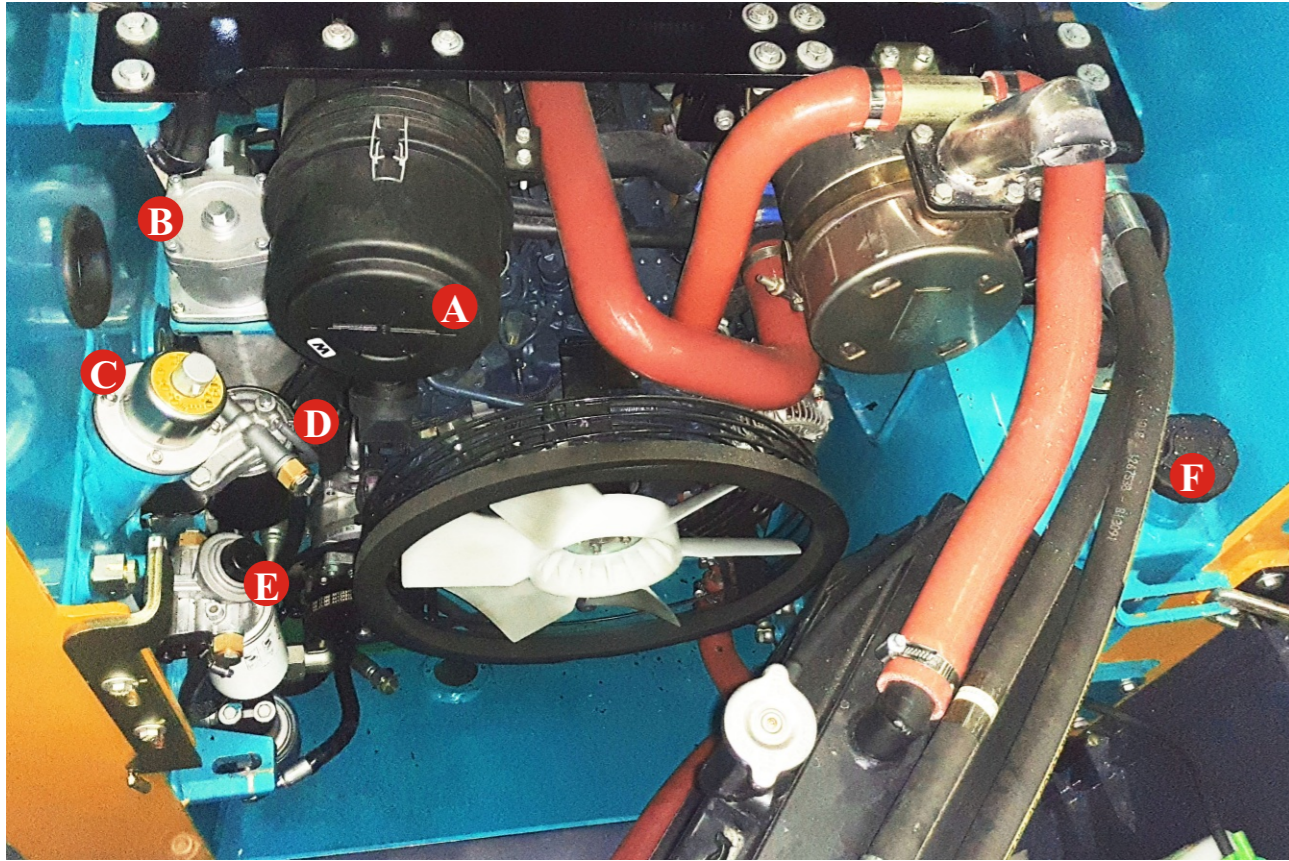


- 大流量输出
Large-discharge output
- 标准流量输出
Standard-discharge output
- 电控制输出
Electronic control output

均可选配大流量系统，产品通过双泵合流加大输出流量，可满足更多大流量属具的需求，如铣刨机等。
A large-discharge system can be selected. With the confluence of two pumps, the product increases the output discharge to meet the demands of more large-discharge accessories such as milling machine.



- ◆ 标配液压平举
Standard Hydraulic Horizontal Hoisting
动臂举升时保证铲斗与地面的角度不变，防止物料下落，减轻操作人员的劳动强度。
When the boom is rising, the angle between bucket and ground will not change to prevent the materials from falling, thus reducing the labor intensity of operators.
- ◆ 工作装置紧急下降功能
Emergency Descent Function of Working Unit
发动机熄火时，动臂可紧急安全下降。
The boom can safely conduct the emergency descent in case of the stalling of engine.



A 空滤器
Air filter

B 液压回油滤芯
Oil return filter

C 液压油加注口
Hydraulic oil tank cap

D 燃油滤芯
Fuel filter

E 油水分离器
Oil-water separator

F 燃油加注口
Engine oil tank cap

G 机油滤芯
Oil filter

H 副水箱
Auxiliary tank

L 暖水阀开关
Heater valve switch

装备配置 Equipment

标准和选配装备根据国家不同可能会有变化，有关详情，请与公司联系。

The standard and optional equipment varies from country to country. For more information, please contact with us.

驾驶室 Cab

FOPS/ROPS 敞篷驾驶室 FOPS/ROPS Cab	<input type="radio"/>
FOPS/ROPS 封闭驾驶室 FOPS/ROPS Canopy	<input checked="" type="radio"/>
安全扶手 Safety armrest	<input checked="" type="radio"/>
可调节座椅 Adjustable seat	<input checked="" type="radio"/>
集中面板 Centralized panels	<input checked="" type="radio"/>
双油门控制 Double-accelerator Control	<input checked="" type="radio"/>
先导操纵手柄 Pilot control handles	<input checked="" type="radio"/>
暖风机 Fan heater	<input checked="" type="radio"/>
冷暖空调 Air conditioner	<input type="radio"/>

液压系统 Hydraulic System

紧急下降 Emergency descent	<input checked="" type="radio"/>
调平功能 Leveling function	<input checked="" type="radio"/>
普通流量 General discharge	<input checked="" type="radio"/>
大流量系统 Large-flow system	<input type="radio"/>

工作装置 Working Unit

通用快换 Standard quick change mechanism	<input checked="" type="radio"/>
标准铲斗 Standard bucket	<input checked="" type="radio"/>
额外配重 Additional counterweight	<input type="radio"/>
标准轮胎 Standard tires	<input checked="" type="radio"/>
实心轮胎 Solid tires	<input type="radio"/>
多样属具 Various accessories	<input type="radio"/>

电气系统 Electrical System

前工作灯 Front work light	<input checked="" type="radio"/>
警示灯 Warning light	<input checked="" type="radio"/>
倒车警报 Back-up beeper	<input checked="" type="radio"/>
喇叭 Horn	<input checked="" type="radio"/>
外接电源 External power supply	<input type="radio"/>
属具电控系统 Electronic accessories control system	<input type="radio"/>
后工作灯 Rear work light	<input type="radio"/>

● 标准配置 Standard equipment

○ 选购配置 Optional equipment



产品参数 Product Parameter

作业参数 Operation Parameter			
A	最大操作高度 Maximum operation height	mm	3850
B	至铲斗销的高度 Height between bucket pin and ground	mm	3002
C	至司机室顶的高度 Height between cab top and ground	mm	2014
D	铲斗水平时至其底部的最大高度 Maximum height between horizontal bucket bottom and ground	mm	2834
E	不带附件时的长度 Length not including accessories	mm	2604
F	带标准铲斗的长度 Length including standard bucket	mm	3318
G	最大高度时的卸载角 Unloading angle at the largest height	°	42
H	卸载高度 Unloading height	mm	2320
J	卸载距离 Unloading distance	mm	475
K	铲斗在地面的翻转角 Flip angle of bucket on the ground	°	30
L	铲斗在最高时的翻转角 Flip angle of bucket at the largest height	°	97
M	轴距 Wheelbase	mm	987
P	离地间隙 Ground clearance	mm	220
Q	离去角 Departure angle	°	25
R	不带附件时的前转弯半径 Front turning radius not including accessories	mm	1235
S	前转弯半径 Front turning radius	mm	1953
T	后转弯半径 Rear turning radius	mm	1531
U	尾部长度 Tail length	mm	1021
V	轮距 Wheel span	mm	1293
W	铲斗宽度 Bucket width	mm	1600
性能 Performance			
	整机重量 Overall weight	kg	2830
	装载量 Loading capacity	kg	750
	倾覆载荷 Tipping load	kg	1500
	铲斗掘起力 Digging force of bucket	kg	2000
	动臂掘起力 Digging force of boom	mm	1900
	最大行驶速度 Maximum traveling speed	km/h	13
	斗容 Bucket capacity	m ³	0.4
发动机 Engine			
	品牌 Brand		KUBOTA
	型号 Model		V2403-CR-TE5B
	类型 Type		4缸、水冷、柴油发动机 4-cylinder, water cooling, diesel engine
	排放标准 Emission standard		EPA Tier4F / EU Stage5
	功率 Power	kW/rpm	48.6/2700
	最大扭矩 Maximum torque	N·m/rpm	198.5/1900
电器系统 Electrical System			
	启动马达 Starting motor	V/kW	12/2.0
	发电机 Generator	V/A	12/60
	蓄电池 Battery	Ah	120
加油量 Fueling Amount			
	液压油箱 Hydraulic oil tank	L	35
	燃油箱 Fuel tank	L	75
液压系统 Hydraulic System			
	标准流量 Standard discharge	L/min	67
	大流量 Large discharge	L/min	98
	标准工作压力 Standard working pressure	bar	210
	大流量工作压力 Large-discharge working pressure	bar	165

